

# NFT40NA COMPRESSOR TECHNICAL SPECIFICATION

---

(220—240V~50Hz)

CHANGHONG HUAYI COMPRESSOR CO., LTD.

**2024**

INDEX

1. Compressor Type .....	2
2. Performance Data.....	2
3. Running Condition.....	2
4. Compressor Mechanical Information.....	3
5. Compressor Shape (connections on suction and process can not be inverted) .....	3
6. Wiring Diagram .....	4
7. Fixing Of Mounting Bracket and Cabinet Base.....	4
8. Assembly of starter and protector .....	4
9. Delivery State.....	5
10. Package、Storage and Transportation .....	5
11. Technical Items .....	6

## 1. Compressor Type

Compressor model	NFT40NA
Rated voltage/frequency	220-240V~50Hz
Refrigerant	R290
Application	LMBP
Cooling method	F
Control device	Capillary tube
Motor type	RSCR
Starting Capacitor	/
Running Capacitor	4

## 2. Performance Data

Displ.(cm <sup>3</sup> )	Capacity(W) ≥95%	Inp.Pow.(W) ≤115%	Rated Current(A) ≤110%	COP (W/W) ≥95%
4.0	200	117.6	0.60	1.70

Testing condition:

Test conditions	LMBP
	ASHRAE
Evaporating Temp.	-23.3°C
Ambient Temp.	32.2°C
Condensing Temp.	54.4°C
Suction Temp.	32.2°C
Subcooling Temp.	32.2°C

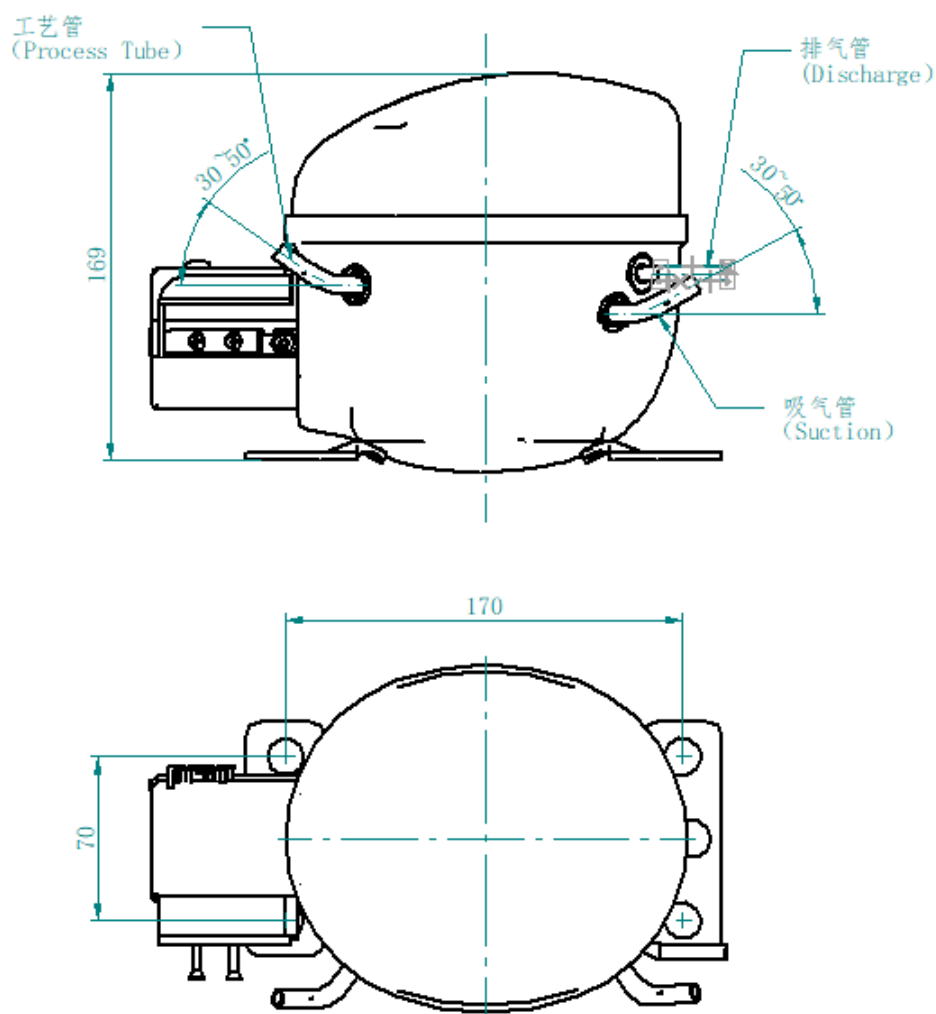
## 3. Running Condition

Ambient temp.	10~43°C
Evaporating temp.	-40~0°C
Voltage range	187~254V
Max. condensing temp.	60°C
Max. winding temp.	130°C
Max. shell temp.	95°C
Max. discharge temp.	110°C

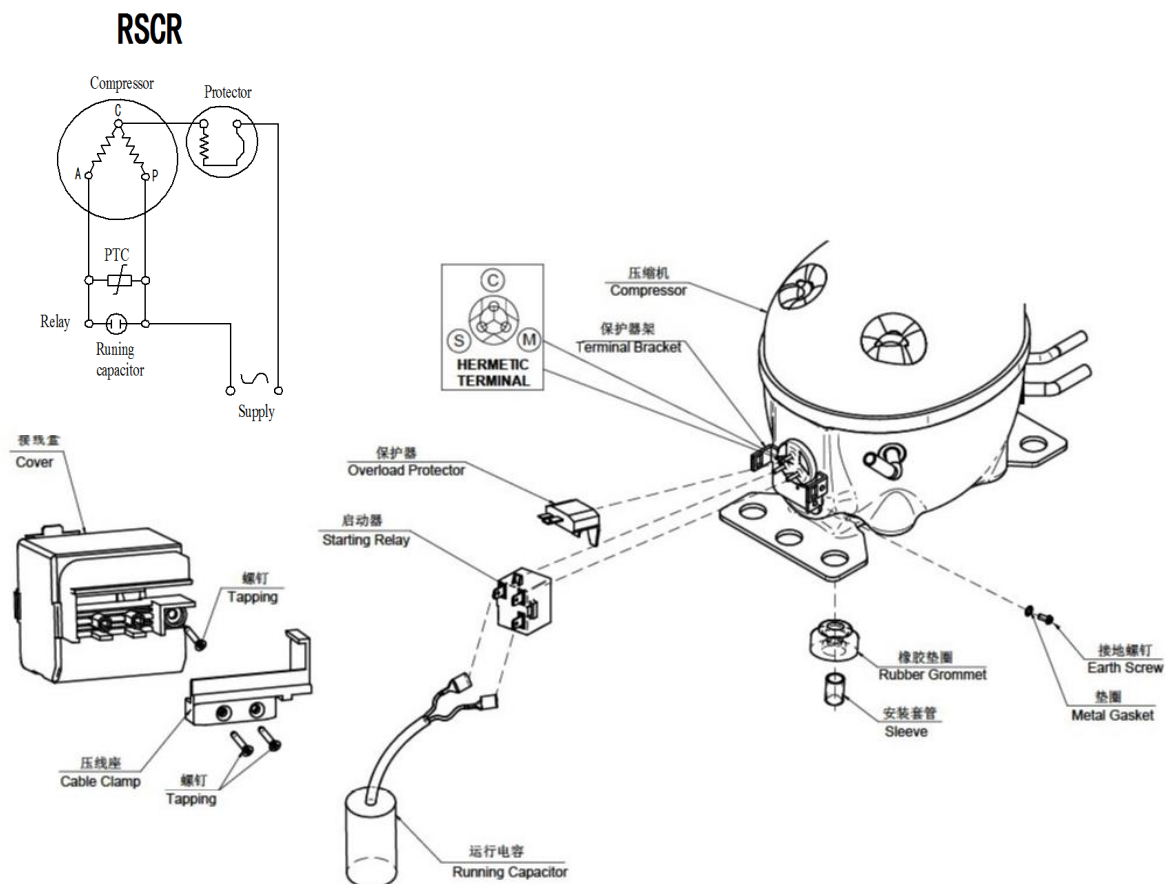
#### 4. Compressor Mechanical Information

Oil type	POE
Oil charged	150±10ml
Weight (With oil charge)	6.9±0.4kg
Diameter of suction tube (I.D.)	$\Phi 6.1^{+0.1}_0$ mm
Diameter of discharge tube(I.D.)	$\Phi 4.9^{+0.1}_0$ mm
Diameter of process tube (I.D.)	$\Phi 6.1^{+0.1}_0$ mm
Material of suction tube, process tube and discharge tube	copper tube

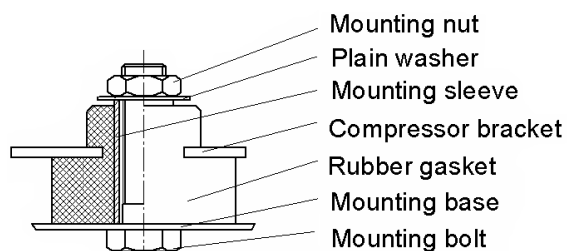
#### 5. Compressor Shape (connections on suction and process can not be inverted)



## 6. Wiring Diagram



## 7. Fixing Of Mounting Bracket and Cabinet Base



## 8. Assembly of starter and protector

### 8.1 Starting relay

**Model:** :QP2-12/B3、QPS2-A15MD3

Compressor model		NFT40NA
Starting relay	Type	QPE2-A15MD3
	Trip Time	S
	Reset time	S
	Max. working voltage	V
	Max current	A

## 8.2 Thermal protector

Compressor model			NFT40NA
Thermal Protector	Model		DRB176S61A2
	Max.T.C Amp.(25℃)	A	4.3
	Trip time	S	7~16
	Open temp.	±5℃	135
	Close temp.	℃	52~70
	Min. T.C. Amp.(70℃)	A	1.35~1.8

Flammability:Anti-flammability

## 9. Delivery State

No.	Name	Model	Quantity	CODE
1.	Compressor	NFT40NA	1pcs	
2.	<i>MOUNTING ACCESSORIES</i>			
2.1.	Rubber Gasket		4 pcs	E.24.12.201S
2.2.	Plain Washer		4 pcs	CTE983-2
2.3.	Mounting Sleeve		4 pcs	CTE943-2
2.4.	Mounting Bolt	M6×30	4 pcs	GB5781-86
2.5.	Mounting Nut	M6	4 pcs	GB6170-86
2.6.	Washer		4 pcs	GB93-87-6
3.	<i>ELECTRICAL ACCESSORIES</i>			
3.1.	Starting Relay	QPE2-A15MD3	1 pcs	
3.2.	Thermal Protector	DRB176S61A2	1 pcs	
3.3.	Running capacitor	4 μ F	1 pcs	
3.4.	Screw Assembly		1 pcs	E.14.24.201
3.5.	Terminal Cover		1 pcs	B.24.01.259

Notes:1.All electrical parts and equipment assembly are supplied separately, not installed on the compressor.

2.All electrical parts and equipment assembly according to Delivery states are all provided by our company.

## 10. Package、Storage and Transportation

Package type	unreusable
Quantity	72 pcs/box
Transportation	By truck or train
Storage	Max. 2 layers
Volume m <sup>3</sup>	0.86
Dimension: length×width×height (mm)	1120×820×940
Main components	Wooden supporter、foam divider、plastic sheet、cardboard cover、wrapping

Movement	Keep the compressor in normal or vertical position (a short time before compressor installed in the refrigerator).
Trans. test requirement	No allowable compressor's damage and performance loss.

## 11. Technical Items

1. After pulling off rubber plugs from the compressor tubes, please connect the compressor to the refrigeration system within 5 minutes. It is advisable to take off the first plug from process tube. No dust or humidity in the air is permitted to enter the compressor.
2. Earth connection should be fixed permanently and reliably.
3. The compressor must be mounted horizontally without tilting an angle more than 5° .
4. Maximum operating ambient temperature is at 43°C.
5. When the compressor starts, balance pressure inside refrigeration system must be less than 0.77Mpa (Absolute).
6. The compressor must not be restarted unless at an interval of more than 5 minutes.
7. Please keep the compressor always vertically and never upset it during transportation while avoiding any vibration and shock.
8. Please store the compressor in a dry and ventilated place and keep it away from any humidity.
9. Please follow the transportation warning marks on the package for layer limitation. Do not roll the whole packages when loading or unloading.
10. Storage expiry is 6 months from the date of production. If it expired, please check the nitrogen pressure inside compressor and recharge it when it is necessary.